

Small Filing Cabinet

Assembly Guide

Branch

The new way of working you've been waiting for.

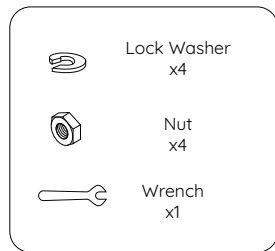
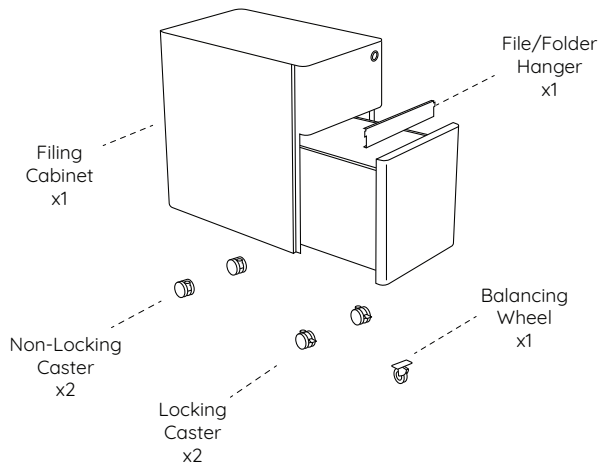
Scan here for a digital copy
of your assembly guide.



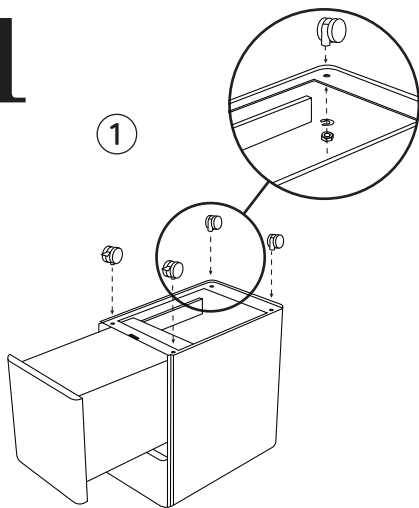
Caution

- Use this product only for its intended purposes in a home or corporate office setting.
- Some screws may be preassembled. If preassembled, ignore assembly instructions.
- Do not sit or stand on the product. The filing cabinet cannot be used as a ladder or stool.
- Gently open and close the drawer to avoid pinching fingers.
- The maximum capacity of each drawer is 33 lbs, please use the product within this range.
- Every six months, please make sure all bolts, screws, and knobs are fully tightened to ensure stability.
- If any parts are missing, broken, damaged, or worn, stop use of the product until repairs are made using Branch authorized parts.
- Failure to follow these warnings could result in serious injury.

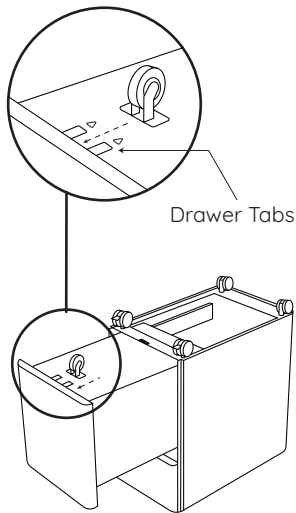
Components



1

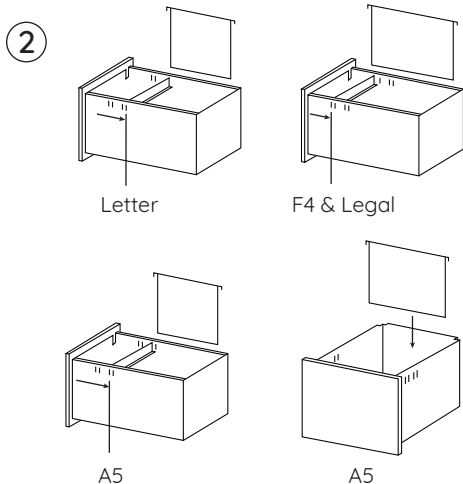
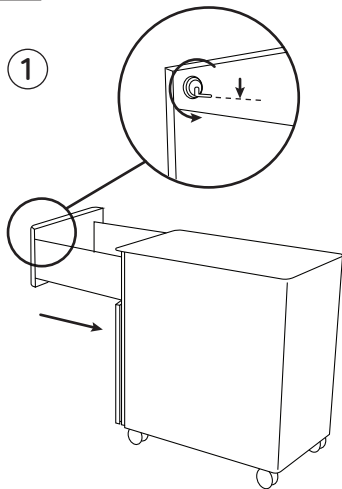


2



Place the **Filing Cabinet** upside down on a flat and clean surface. Open the bottom drawer, install the **Locking Casters** (x2) at the front of the cabinet, and the **Non-Locking Casters** (x2) at the back. Secure the Casters with the **Lock Washers** (x4) and **Nuts** (x4) using the included **Wrench**. Mount the **Balancing Wheel** (x1) to the underside of the bottom drawer. Slide into the **Drawer Tabs**, ensuring the **Balancing Wheel** is curved towards the back of the cabinet, it should 'pop' in.

2



Before closing the drawer, turn the key so the bolt lock is facing down.
Install the **File/Folder Hanger** (x1) in whichever orientation works best for you.

Contact

Have a question, comment, or suggestion?

hello@branchfurniture.com
branchfurniture.com

V1.0-2025-02-24

Branch