

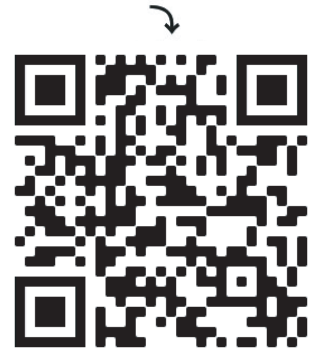
Aire Chair

Assembly Guide

Branch

The new way of working you've been waiting for.

Scan here for a digital copy
of your assembly guide.

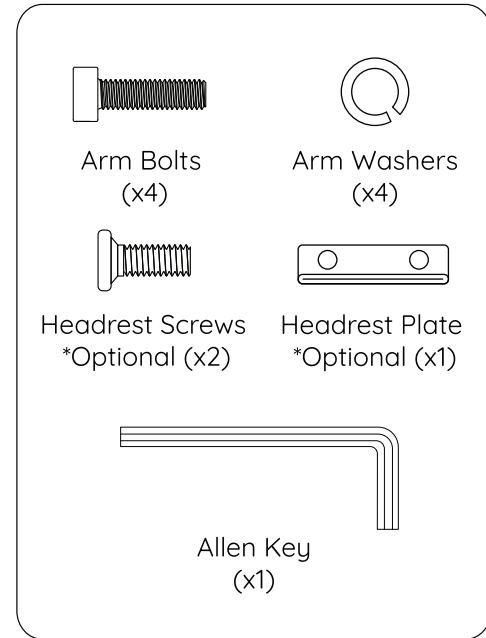
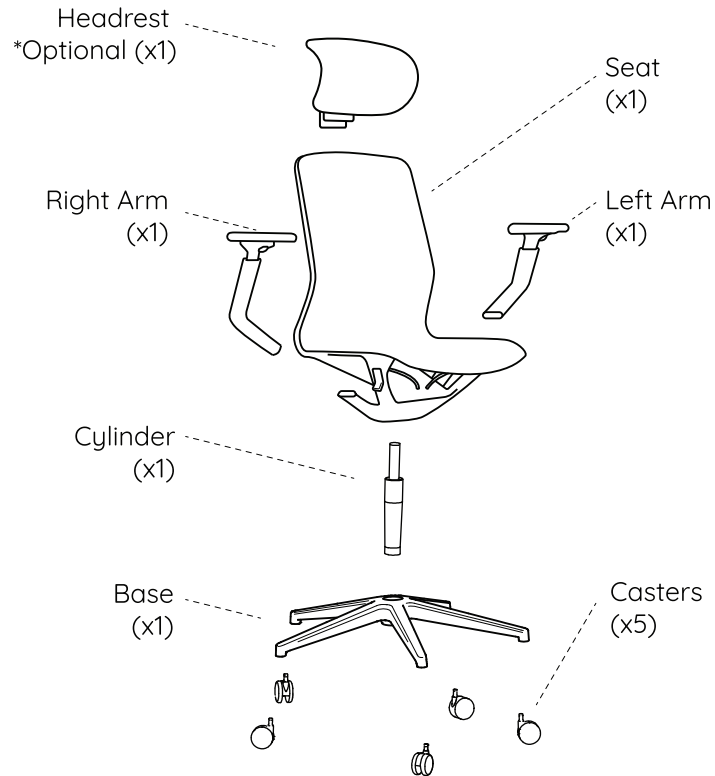




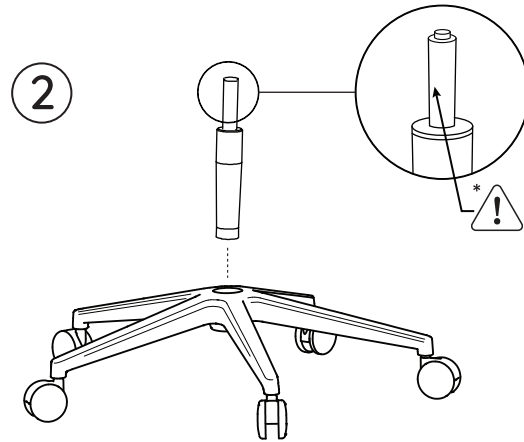
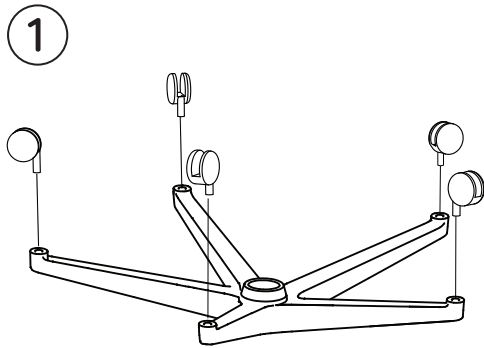
Caution

- Use this product only for seating one person at a time.
- Some screws may be preassembled. If preassembled, ignore assembly instructions.
- Handle the cylinder and mechanism parts carefully as they may have grease, which can stain chair fabric or clothing.
- Do not use this chair as a step stool/ladder, or on uneven floor surfaces.
- Do not sit on any part of the chair except the seat.
- Do not use chair unless all bolts, screws, and knobs are tightened.
- Every six months, please make sure all bolts, screws, and knobs are fully tightened to ensure stability.
- If any parts are missing, broken, damaged, or worn, stop use of the product until repairs are made using Branch-authorized parts.
- Failure to follow these warnings could result in serious injury.

Components



1

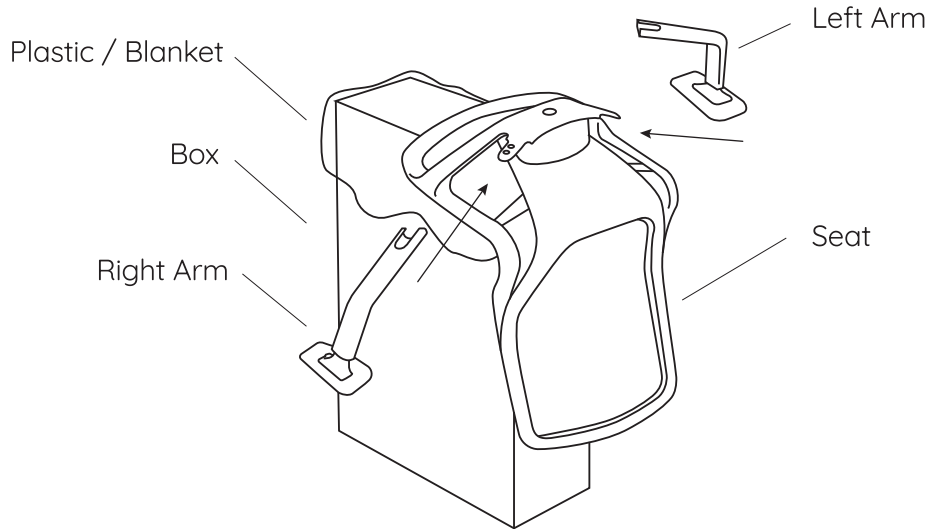


On a clean, flat surface, with the **Base** (x1) upside down, push the **Casters** (x5) into each hole with a fair amount of force (they should ‘pop’ in). Once completed, turn the base over and insert the **Cylinder** with the larger end facing the floor. Set the assembled base aside for now—we’ll get back to it later!



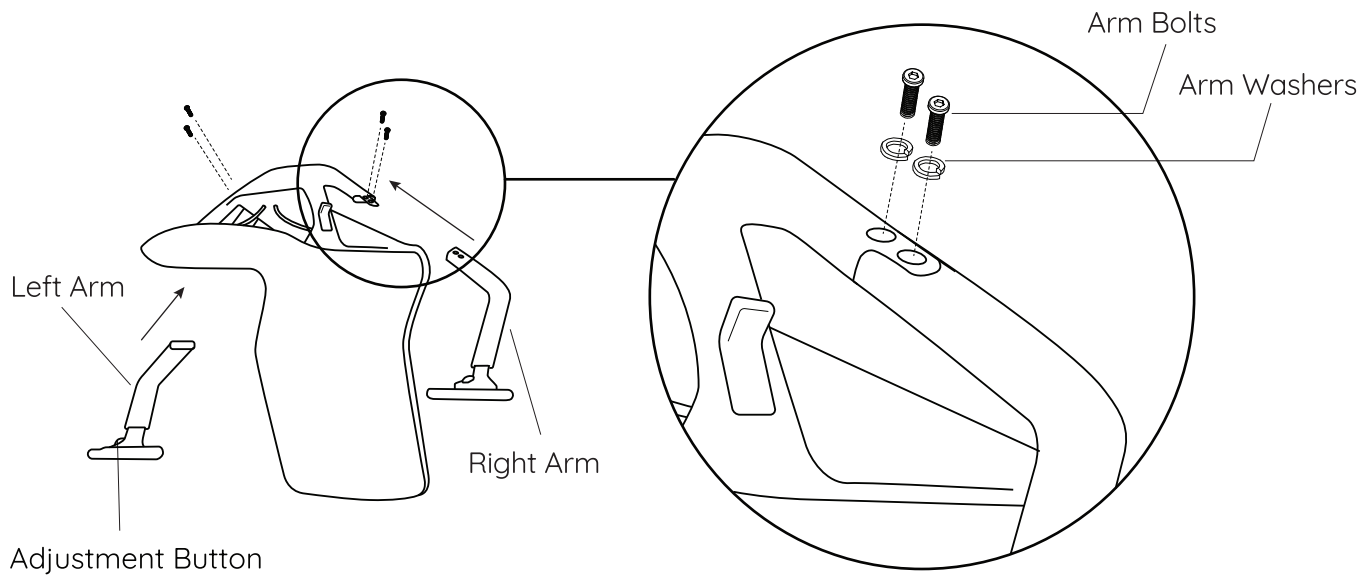
* Caution: Handle the cylinder carefully as it may have grease on top, which can stain chair fabric or clothing.

2



The box your chair arrived in can serve as a helpful platform for assembling your Aire Chair. Using a blanket or the included bag from inside the box, cover the top portion of the box to prevent dirt from staining the chair or your clothing. Carefully position the **Seat** (x1) upside down on the top of box and proceed to the next step.

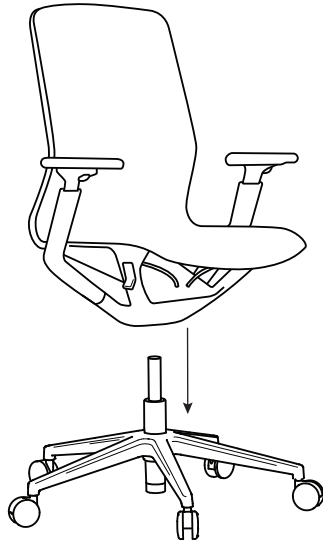
3



Insert the **Right Arm** (x1) and **Left Arm** (x1) into the sides of the **Seat** (x1) making sure the Arm Adjustment Buttons face the front of the **Seat**. Insert the **Arm Bolts** (x2 per arm) and **Arm Washers** (2x per arm), securely tighten using the **Allen Key** (x1)

4

1

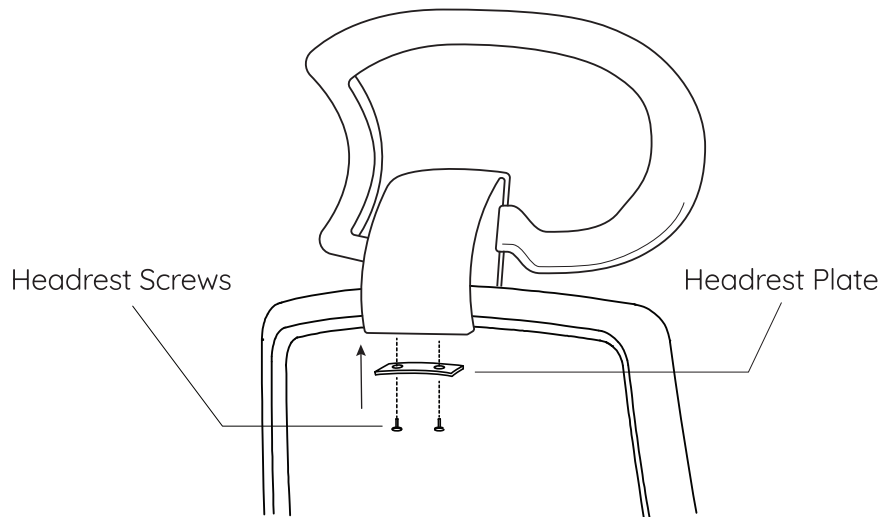


2



Carefully lower your assembled chair top onto the base, aligning the **Cylinder** with the bottom of the **Mechanism**. Push down firmly to secure.

5 (Optional)



Attach the **Headrest** (x1) to the top of the backrest of the **Seat**, ensuring the headrest is properly aligned at the center. Next, align the holes on the **Headrest Plate** base to the chair frame, insert the **Headrest Screws** (x2), and securely tighten using the **Allen Key** (x1)

All Done!

Go ahead, try it out. You may experience what we call an “ahhh” sensation. That’s completely normal. You’re now well equipped for whatever the workday throws at you.

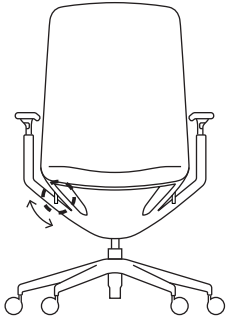
Now, don’t be shy. Show us how it looks!

@branchfurniture
#officebybranch

User Guide

Seat Height:

Lever on the Right side



To raise:

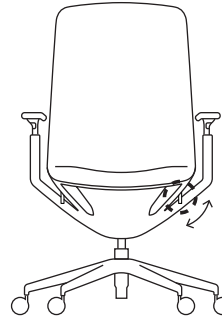
While taking your weight off the chair, lift the lever up.

To lower:

While seated, lift the lever up.

Seat Tilt:

Paddle on the Left side.



To lock:

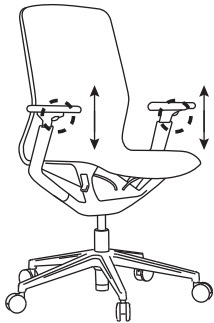
Lift up the paddle in either an upright or leaned back position.

To unlock:

Push the paddle down while leaning back at the same time until you hear a click, then lean forward.

Armrest Height:

Button under each armrest

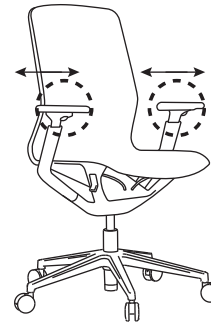


To raise or lower:

While seated, push and hold button to raise or lower arm. Release button to lock.

Armrest Position:

Top of Each Armrest



To adjust:

While seated, grasp the armrest and slide it forwards/backwards or rotate clockwise/counterclockwise to your preferred position.

Contact

Have a question, comment, or suggestion?

hello@branchfurniture.com
branchfurniture.com

Branch